

# Charlton®

*air*



## HIGH SPEED SABRE SAW

MODEL NO: CAT32B

PART NO: 3110426

## OPERATING & MAINTENANCE INSTRUCTIONS

UK  
CA | CE

ORIGINAL INSTRUCTIONS

DL1222 - ISS 4

---

## INTRODUCTION

---

Thank you for purchasing this CLARKE Sabre Saw, suitable for cutting metal, wood, polymers and other materials.

Before attempting to use this product, please read this manual thoroughly and follow the instructions carefully. In doing so you will ensure the safety of yourself and that of others around you, and you can look forward to your purchase giving you long and satisfactory service.

**Please keep these instructions for future reference.**

---

## GUARANTEE

---

This product is guaranteed against faulty manufacture for a period of 12 months from the date of purchase. Please keep your receipt which will be required as proof of purchase.

This guarantee is invalid if the product is found to have been abused or tampered with in any way, or not used for the purpose for which it was intended.

Faulty goods should be returned to their place of purchase, no product can be returned to us without prior permission.

This guarantee does not effect your statutory rights.

---

## ENVIRONMENTAL PROTECTION

---

Do not dispose of this product with general household waste. All tools, accessories and packaging should be sorted, taken to a re-cycling centre and disposed of appropriately.

---

# TABLE OF CONTENTS

---

INTRODUCTION.....	2
GUARANTEE.....	2
ENVIRONMENTAL PROTECTION.....	2
TABLE OF CONTENTS.....	3
SAFETY PRECAUTIONS.....	4
OVERVIEW.....	6
AIR SUPPLY REQUIREMENTS.....	7
ASSEMBLY.....	8
OPERATION.....	9
MAINTENANCE.....	10
TROUBLESHOOTING.....	11
PARTS LIST & DIAGRAM.....	12
SPECIFICATIONS.....	14
DECLARATION OF CONFORMITY.....	15

---

# GENERAL SAFETY RULES

---



CAUTION: FAILURE TO FOLLOW THESE PRECAUTIONS COULD RESULT IN PERSONAL INJURY, AND/OR DAMAGE TO PROPERTY.

---

## WORK ENVIRONMENT

1. Keep the work area clean and tidy.
2. Dress appropriately: - do not wear loose clothing or jewellery. Tie long hair out of the way.
3. Keep children and visitors away - do not let children handle the drill.
4. Do not operate the saw where there are flammable liquids or gases.
5. Stay alert and use common sense - do not operate the saw when you are tired or under the influence of alcohol, drugs or medication.
6. Always wear eye protectors when using the saw - Eye protection must provide protection from flying particles from the front and the side.
7. Always wear ear protectors and face mask when using the saw.
8. Do not overreach - Keep proper footing and balance at all times.

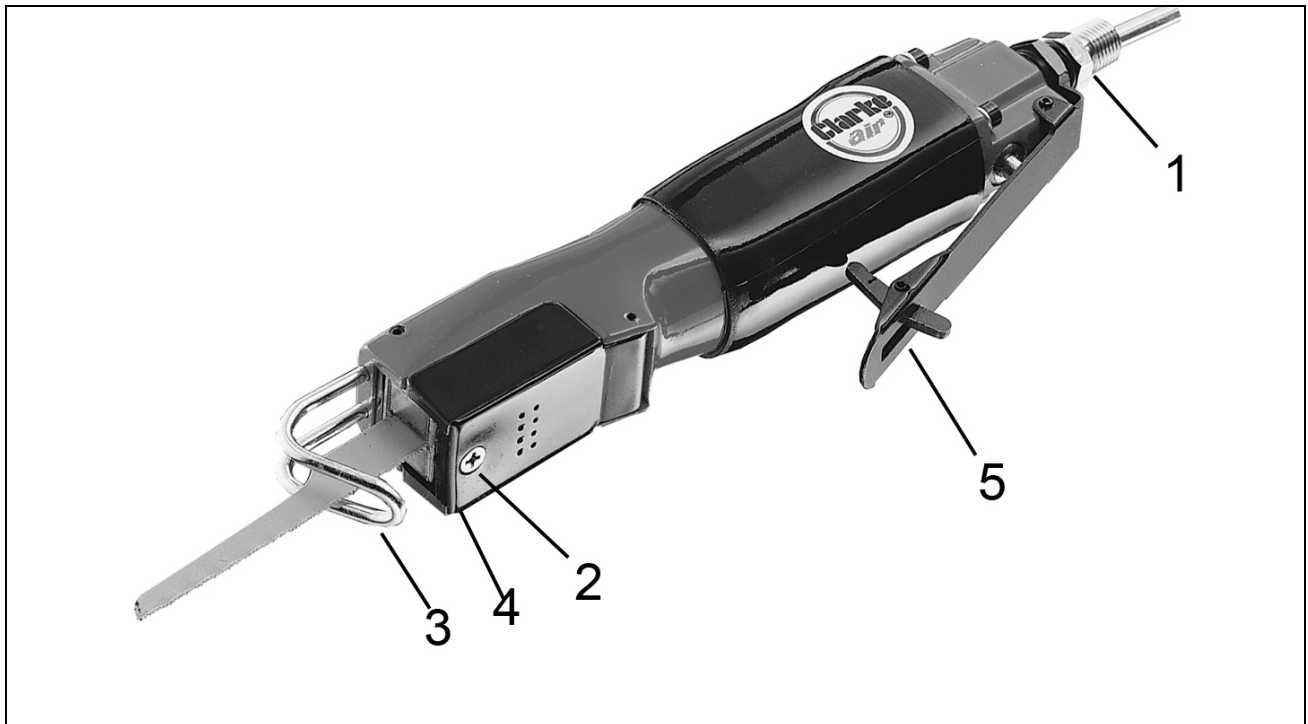
## USE OF AIR POWERED TOOLS

1. Never use any type of bottled gas as a source of power for an air tool.
2. Do not connect the air supply hose with your finger on the trigger.
3. Do not exceed the maximum pressure for the saw 90 psi / 6.2 bar.
4. Check hoses for leaks or worn condition before use and ensure that all connections are secure.
5. Keep the air supply hose away from heat, oil and sharp edges.
6. Do not use this saw for any other purpose than that described in this manual.
7. Do not fit this saw to any stand or clamping device that may damage it.
8. Do not carry out any alterations or modifications to this saw.
9. Always disconnect from the air supply when:
  - Performing any maintenance
  - The saw is not in use.
  - The saw will be left unattended.

- Moving to another work area.
- Passing the saw to another person.

10. Never use the saw if it is defective or operating abnormally.
11. Always ensure the saw has stopped before putting it down.
12. The saw should be repaired if required by qualified service personnel.
13. Avoid damaging the saw for example by applying excessive force.
14. ALWAYS maintain the saw with care. Keep it clean for the best and safest performance.
15. Quick change couplings should not be located at the air tool. They add weight and could fail due to vibration.
16. Do not force or misuse the saw. It will do a better and safer job at the rate for which it was designed.
17. Do not remove any labels. Damaged labels should be replaced.
18. This saw vibrates with use. Vibration may be harmful to your hands or arms. Stop using the saw if discomfort, a tingling feeling or pain occurs. Seek medical advice before resuming use.
19. Never carry the saw by the air hose.
20. Never carry the saw with your finger on the trigger.
21. When not in use the tool must be disconnected from the air supply and stored in a dry place out of the reach of children (preferably in a locked cabinet).
22. Avoid storage in environments where the temperature is below 0°C.

## PRODUCT DESCRIPTION



NO	DESCRIPTION
1	Air Inlet
2	Locking Setscrew
3	Work Guide

NO	DESCRIPTION
4	Blade Holder
5	Safety Trigger

The CAT32B Sabre Saw is ideal for use in garages and workshops for cutting body panels, exhausts, plastics etc.

Should you require any component parts, refer to pages 12 and 13 in the manual and contact your Clarke dealer.

When unpacking the tool, any damage or deficiency should be reported to your CLARKE dealer immediately. The carton contains:

- Heavy Duty Sabre Saw
- Set of 3 Blades
- 2 x Hex Keys

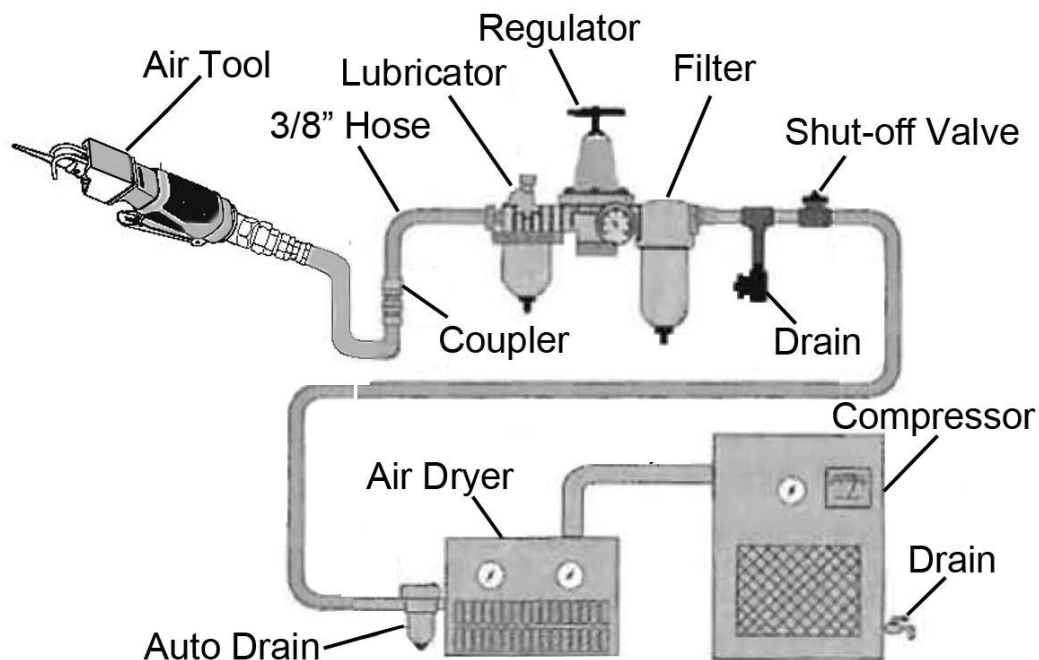
Your sabre saw has been designed to give long and trouble free service. If, however, having followed the instructions in this booklet carefully, you encounter problems, take the unit to your local CLARKE dealer.

# COMPRESSED AIR REQUIREMENTS



**WARNING: COMPRESSED AIR CAN BE DANGEROUS. ENSURE THAT YOU ARE FAMILIAR WITH ALL PRECAUTIONS RELATING TO THE USE OF COMPRESSORS AND A COMPRESSED AIR SUPPLY.**

- Use only clean, dry, regulated compressed air as a power source.
- Air compressors used with the tool must comply with the appropriate European Community Safety Directives.
- A build-up of moisture or oil in the air compressor will accelerate wear and corrosion in the tool. Ensure any moisture is drained from the compressor daily and the inlet filter is kept clean.
- If an unusually long air hose is required, (over 8 metres), the line pressure or the hose inside diameter may need to be increased.
- The air hose must be rated at least 150% of the maximum operating pressure of the tool.



- A typical air line layout is shown above. If an automatic in-line filter/regulator is used, it will keep the air tool in good condition, but should be regularly checked and topped up with oil. SAE 10 oil should be used and the lubricator adjusted to approx 2 drops per minute.
- The minimum hose diameter should be 5/16" (8mm) ID and fittings should have the same internal dimensions.

- Never exceed the maximum operating pressure for the air tool. It is recommended that air pressure to this tool does not exceed 90 psi (6.2 bar) at the tool when running. Higher pressures and unclean air will shorten the life of the tool due to faster wear and is a possible safety hazard.

---

## BEFORE USE

---

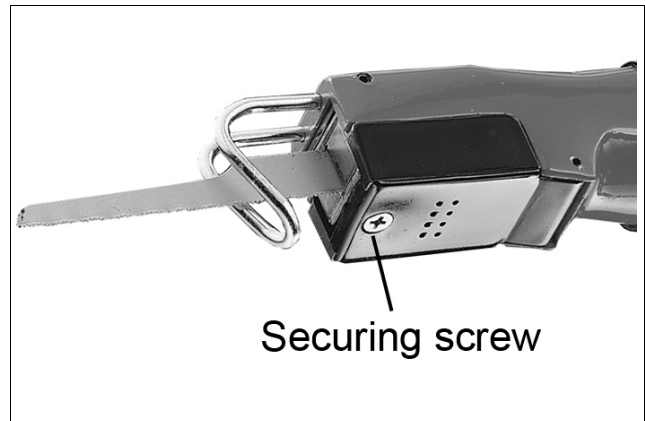


**WARNING: MAKE SURE THAT THE SAW IS DISCONNECTED FROM THE AIR SUPPLY BEFORE INSTALLING, REMOVING OR REPLACING THE BLADE.**

---

### FITTING/REPLACING THE BLADE

1. Slide the blade into the saw as shown.
2. Remove the protective cover by undoing the screw shown.
3. Secure the blade by tightening the two hex screws using the hex key supplied.



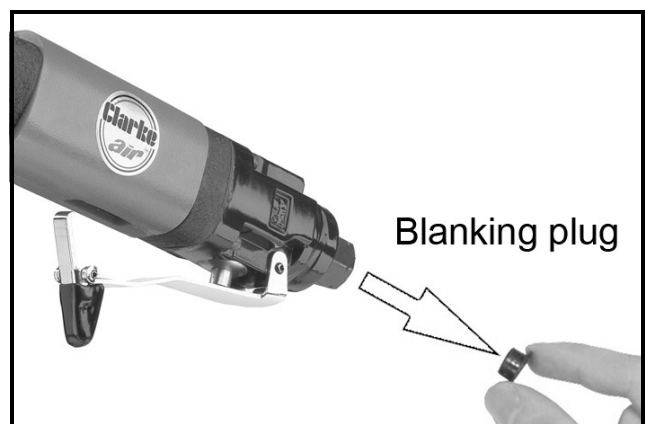
### CONNECTING THE AIR LINE



**WARNING: COMPRESSED AIR CAN BE DANGEROUS. ENSURE THAT YOU ARE FAMILIAR WITH ALL PRECAUTIONS RELATING TO THE USE OF COMPRESSORS AND COMPRESSED AIR SUPPLIES.**

---

1. Remove the plastic blanking plug from the connection port of the tool.
2. Pour 2-3 drops of CLARKE airline oil into the air inlet. This should be done regardless of whether or not a lubricated air supply is to be used.
3. Connect a suitable hose to the tool as shown.





4. Connect the other end of the hose to the compressor. (A whip hose with a quick fit coupling is available from your CLARKE dealer).
5. Turn on the air supply and check for air leaks. Rectify any found before proceeding. The tool is now ready for use.

## USEFUL AIRLINE ITEMS FROM THE CLARKE RANGE

CAT150 Mini-Oiler:- Part No 3120164

8mm Rubber Whip Hose:-Part No 3120104

CAT58 6mm Recoil Hose with 1/4" bsp connectors (25 feet):-Part No 3110458

CAT59 6mm Recoil Hose with 1/4" bsp connectors (50 feet):-Part No 3110459

CRH9 9metres professional recoil hose:-Part No 3120100

CAR20PC Manual Air Hose Reel:-Part No 3126250

CAR15PC PVC hose in moulded case with auto re-wind:-Part No 3126000

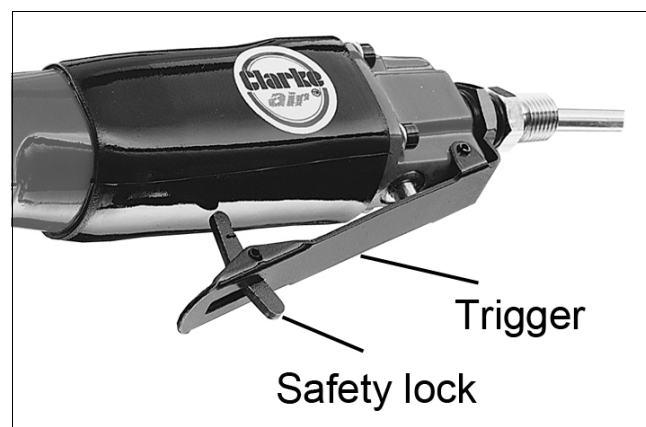
**See the latest catalogue for details of snap couplings & pressure gauges.**

---

## OPERATION

---

1. Slide the safety lock forward.
2. Squeeze the trigger.
  - Allow the saw to reach full speed before use.
3. Release the trigger to stop the saw. When the blade has stopped remove it from the workpiece.
4. Release the trigger to stop the tool.
5. Always ensure the tool has stopped before putting it down.



## DISCONNECTING THE AIR SUPPLY

1. Do not disconnect the air supply hose until the air supply has been shut down and the compressed air released from the hose.
  - Refer to the compressor instruction manual for the procedure to shut down and release the compressed air.
  - Once the pressure has been released, disconnect the air supply hose from the saw.

---

# MAINTENANCE

---



**WARNING: MAKE SURE THAT THE SAW IS DISCONNECTED FROM THE AIR SUPPLY BEFORE STARTING ANY CLEANING OR MAINTENANCE PROCEDURES.**

---

Please note that factors other than the tools condition may effect its operation and efficiency, such as reduced compressor output, excessive drain on the airline, moisture or restrictions in the air-line, or the use of connectors improper size or poor condition which will reduce air supply.

## DAILY

1. Before use, drain water from the air-line and compressor.
2. Lubricate the saw daily for optimum performance. Use a high quality airline oil either via a lubricator in the air supply system or by placing a few drops into the air inlet immediately before use. This should be carried out regardless of whether or not an in-line lubricator is used.

## CLEANING & OVERHAUL

1. Keep the saw clean and free from debris.
2. If the saw becomes sluggish and the air supply is of good quality, it may be necessary to replace worn or damaged parts.
3. Grit or gum deposits in the mechanism may eventually reduce efficiency. This condition can be corrected by cleaning the air inlet filter and flushing out the saw with gum solvent oil or an equal mixture of SAE No10 oil and paraffin.
4. Failing this, the saw should be disassembled, thoroughly cleaned, dried and reassembled. You may prefer to take the saw to your CLARKE dealer if internal maintenance is required.

## STORAGE

If the saw is to be stored or is idle for longer than 24 hours, run a few drops of Clarke air-line oil into the air inlet and depress the trigger in order to lubricate the internal parts.

When not in use, the saw should be disconnected from the air supply and stored in a dry place out of the reach of children. Avoid storing in a damp environment.

## TROUBLESHOOTING

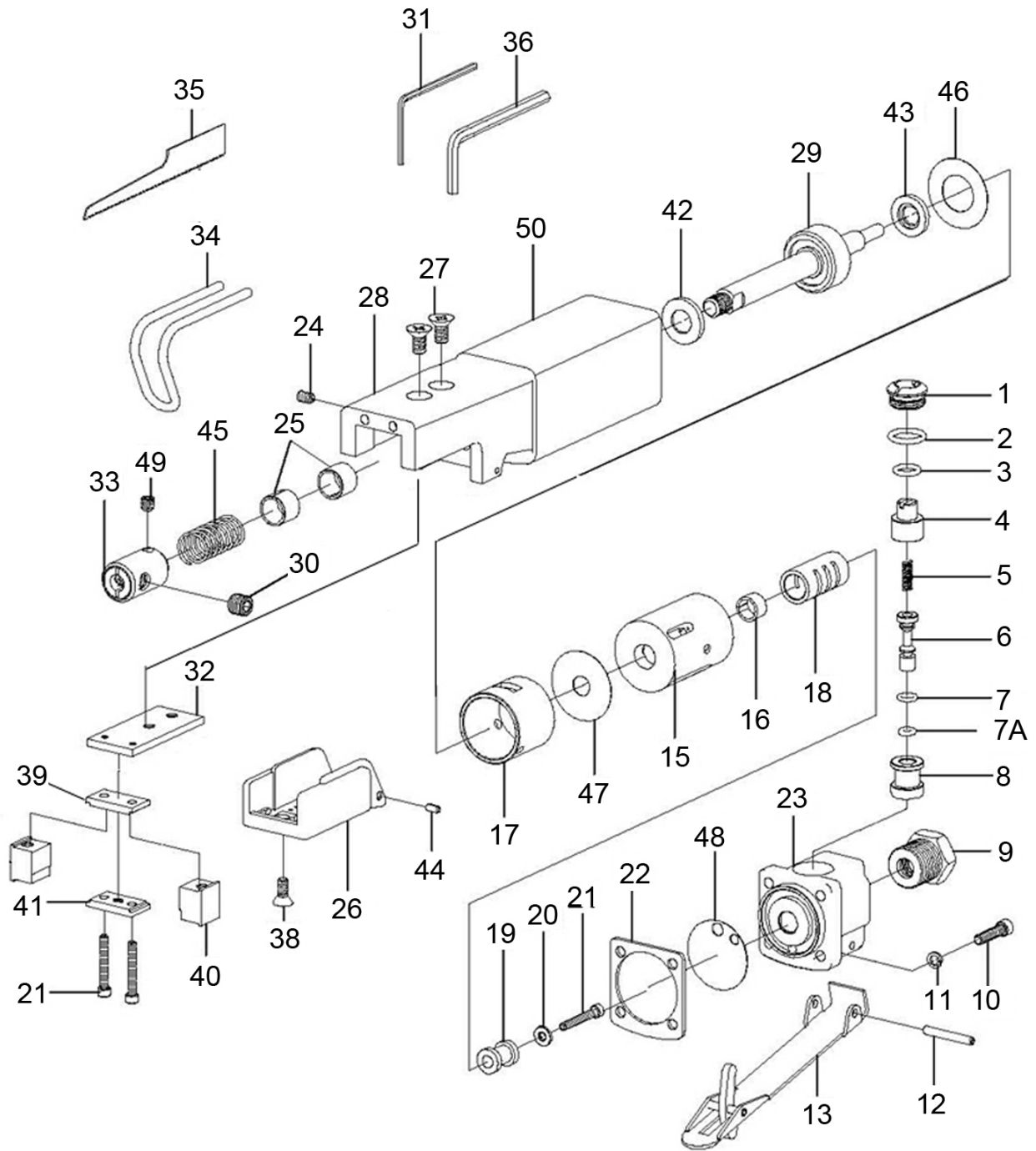
SYMPTOM	PROBLEM	SOLUTION
Tool runs at normal speed but slows down under any load.	<ol style="list-style-type: none"> <li>1. Excessive pressure on drill.</li> <li>2. Motor parts worn.</li> <li>3. Worn or sticking mechanism due to lack of lubricant.</li> </ol>	<ol style="list-style-type: none"> <li>1. Reduce the force applied to the drill.</li> <li>2. Return to Clarke dealer for repair.</li> <li>3. Drip air tool lubricating oil into air inlet. Allow oil to soak moving parts before using.</li> </ol>
Tool runs slowly. Air flows weakly from exhaust.	<ol style="list-style-type: none"> <li>1. Motor parts jammed with gum/dirt.</li> <li>2. Regulator in closed position.</li> <li>3. General airflow blocked by dirt.</li> </ol>	<ol style="list-style-type: none"> <li>1. Examine inlet air filter for cleanliness.</li> <li>2. Adjust regulator to open position.</li> <li>3. Operate tool in short bursts.</li> </ol>
Tool will not run. Air flows freely from exhaust.	<ol style="list-style-type: none"> <li>1. Motor vanes stuck due to buildup of foreign material.</li> </ol>	<ol style="list-style-type: none"> <li>1. Disconnect air supply and rotate tool assembly manually.</li> <li>2. Try operating tool in short bursts.</li> <li>3. Tap motor housing gently with a rubber mallet.</li> <li>4. Drip a few drops of air tool lubricating oil into air inlet to soak moving parts.</li> </ol>
Tool will not shut off.	<ol style="list-style-type: none"> <li>1. O-rings damaged or ill-fitting in seat.</li> </ol>	<ol style="list-style-type: none"> <li>1. Return to Clarke dealer for repair.</li> </ol>

### REPLACEMENT BLADES

Replacement blades are available from your CLARKE dealer:

- Part no. 3110429

# PARTS DIAGRAM



## COMPONENT PARTS

No	Description
1	Valve screw cap
2	O-ring
3	O-ring
4	Air controller
5	Valve spring
6	Valve stem
7	O-ring
7a	O-ring
8	Valve bush
9	Inlet bush
10	Cap screw
11	Washer
12	Lever hinge pin
13	Throttle lever
14	N/a
15	Valve body
16	Bush
17	Cylinder
18	Valve sleeve
19	Valve actuator
20	Washer
21	Cap headed screw
22	Gasket
23	Valve body
24	Set screw
25	Bush

No	Description
26	Blade chuck cover
27	Screw
28	Housing
29	Piston assembly
30	Set screw
31	Hexagonal key
32	Guide plate
33	Blade chuck
34	Work guide
35	Saw blade (24 or 32 teeth)
36	Hexagonal key
37	N/a
38	Screw
39	Upper wear shoe
40	Blade guide
41	Bridge
42	Front bumper
43	Rear bumper
44	Roll pin
45	Spring
46	Packer
47	Packer
48	Packer
49	Set screw
50	Plastic cover

# SPECIFICATION

<b>Model Numbers</b>	<b>CAT32B</b>
Minimum Hose Size (ID)	6 mm (1/4")
Air Inlet Size	1/4" BSP Female
Max Operating Pressure	90 psi (6.2 bar)
Air Consumption (Average)	5 cfm
Max Speed	10,000 strokes/pm @ 90psi
Sound Pressure Level (LpA dB)	89 dB(A)
Sound Power Level (LwA dB)	100 dB(A)
Vibration Levels	27.95 m/s <sup>2</sup>
Vibration Uncertainty K:	3.26 m/s <sup>2</sup>
Weight	0.5 kg
Stroke length	13 mm

Please note that the details and specifications contained herein are correct at the time of going to print. However CLARKE International reserve the right to change specifications at any time without prior notice.

# DECLARATION OF CONFORMITY

**UKCA**

**CLARKE INTERNATIONAL**  
Hemmill Street, Epping, Essex CM16 4JG

**DECLARATION OF CONFORMITY**

**This is an important document and should be retained.**

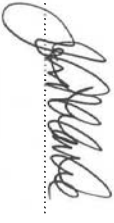
We hereby declare that this product(s) complies with the following statutory requirement(s):  
*Supply of Machinery (Safety) Regulations 2008*

The following standards have been applied to the product(s):  
EN/ISO 11148-12:2012

The technical documentation required to demonstrate that the product(s) meet(s) the requirement(s) of the aforementioned legislation has been compiled and is available for inspection by the relevant enforcement authorities.

The UKCA mark was first applied in: 2022

**Product Description:** High Speed Air Sabre Saw  
**Model number(s):** CAT32B  
**Serial / batch Number:** N/A  
**Date of Issue:** 29/11/2022

Signed:   
J.A. Clarke  
Director

CAT32B UKCA Clarke DOC 291122

Page 1 of 1

**CE**

**CLARKE INTERNATIONAL**  
Fitzwilliam Hall, Fitzwilliam Place, Dublin 2

**DECLARATION OF CONFORMITY**

**This is an important document and should be retained.**


We hereby declare that this product(s) complies with the following directive(s):  
2006/42/EC *Machinery Directive*

The following standards have been applied to the product(s):  
EN/ISO 11148-12:2012

The technical documentation required to demonstrate that the product(s) meet(s) the requirement(s) of the aforementioned directive(s) has been compiled and is available for inspection by the relevant enforcement authorities.

The CE mark was first applied in: 2012

**Product Description:** High Speed Air Sabre Saw  
**Model number(s):** CAT32B  
**Serial / batch Number:** N/A  
**Date of Issue:** 29/11/2022

Signed:   
J.A. Clarke  
Director

CAT32B CE Clarke DOC 112922

Page 1 of 1

A SELECTION FROM THE VAST RANGE OF

**Clarke**<sup>®</sup>

**QUALITY PRODUCTS**



**AIR COMPRESSORS**  
From DIY to industrial, Plus air tools, spray guns and accessories.

**GENERATORS**  
Prime duty or emergency standby for business, home and leisure.

**POWER WASHERS**  
Hot and cold, electric and engine driven - we have what you need

**WELDERS**  
Mig, Arc, Tig and Spot. From DIY to auto/industrial.

**METALWORKING**  
Drills, grinders and saws for DIY and professional use.

**WOODWORKING**  
Saws, sanders, lathes, mortisers and dust extraction.

**HYDRAULICS**  
Cranes, body repair kits, transmission jacks for all types of workshop use.

**WATER PUMPS**  
Submersible, electric and engine driven for DIY, agriculture and industry.

**POWERTOOLS**  
Angle grinders, cordless drill sets, saws and sanders.

**STARTERS/CHARGERS**  
All sizes for car and commercial use.



**PARTS & SERVICE:**

**0208 988 7400**

**Parts Enquiries**

**Parts@clarkeinternational.com**

**Servicing & Technical Enquiries**

**Service@clarkeinternational.com**

**SALES: UK 01992 565333 or Export 00 44 (0)1992 565335**

**Clarke**<sup>®</sup> INTERNATIONAL Hemnall Street, Epping, Essex CM16 4LG  
[www.clarkeinternational.com](http://www.clarkeinternational.com)